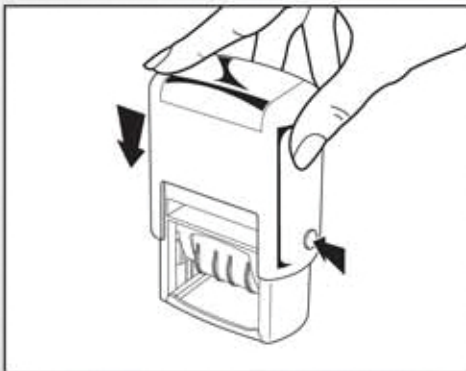


trodat[®]

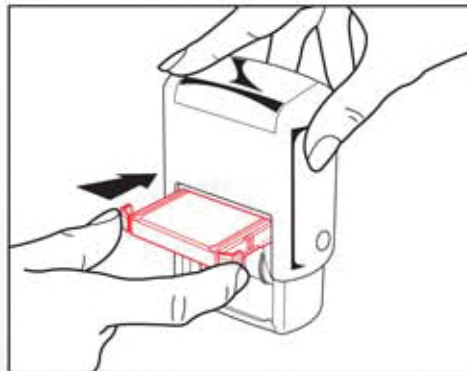
ALL-NEW PRINTY 4750 REPLACEMENT INK CARTRIDGE



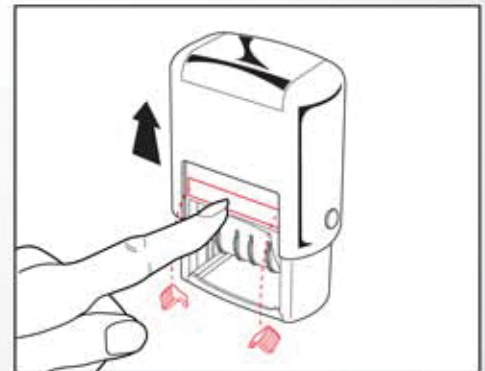
- **NEW GRIP TABS FOR EASY AND CLEAN INK CARTRIDGE CHANGE**
- **REPLACES CURRENT 4750 INK CARTRIDGES**



1. Press the Printy 4750's handle downward while pressing in the red side locking buttons until there is an audible click, locking the handle in place.



2. With the handle locked in place, slide the new ink cartridge in with the inked foam facing downward, making sure to utilize the new grip tabs to prevent inky fingers and ensure secure handling.



3. Push the ink cartridge all the way in until the grip tabs pop off and the cartridge clicks into place. Next, gently depress the handle to release the side locking buttons. Your Printy 4750 is ready to use.